



**dcS** Hybrid  
diamond cleaning system

EN



**HTC**  
**Diamond Cleaning System**  
Just add water







# HTC introduces a revolutionary way to clean floors

DCS – Diamond Cleaning System – is a new way to mechanically treat and maintain floors using microscopic diamonds. There are two different DCS methods: Twister™ and Hybrid™. Both systems are part of the eco-friendly cleaning revolution.



## Twister™

– for a brilliant cleaning result every day

Twister™ is a revolutionary cleaning system consisting of floor pads prepared with billions of microscopic diamonds which clean and polish the floor mechanically instead of using chemicals. Twister™ can be used on the most common floor surfaces such as terrazzo, natural stone, concrete, vinyl and epoxy. Twister™ is the tool that transforms your dull, worn floors into clean, glossy and brightly polished floors. Twister™ has unique advantages that benefit both the cleaning company and the floor owner.



## Hybrid™

– makes your old floor look like new

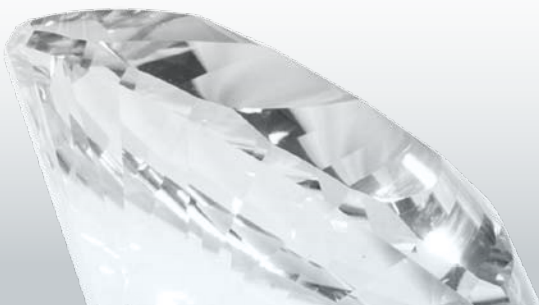
HTC introduces the new problem solver for the stone floor renovation industry. The DCS Hybrid™ system gives new life to damaged and heavily worn natural stone and terrazzo floors. Easy to use and environmentally friendly, the DCS Hybrid™ gives you an opportunity to remove stains, scratches and “orange peel” using only ordinary cleaning machines and water. Refurbish your floor instead of replacing it!





# Getting the perfect floor is easy

## Four reasons to clean smarter

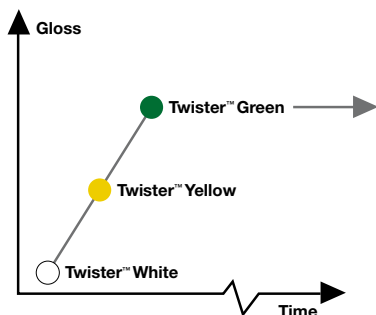


### Outstanding quality

– clean floors with high gloss every day

Twister™ pads bring out the beautiful features of your floor. The results achieved are unbelievable! The Twister™ method is unique in that periodic maintenance, polish and waxes\* are no longer needed! The secret behind the outstanding result is the use of mechanical cleaning with billions of microscopic diamonds.

- High level of gloss
- Extreme cleanliness
- Easier maintenance



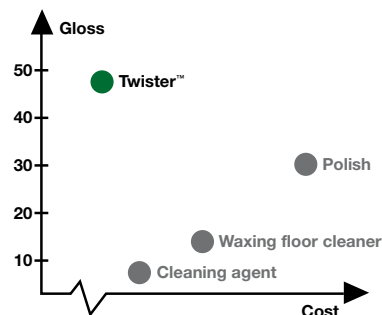
\* Twister™ will improve quality and prolong the life of floors with wax coatings.

### Cost efficient

– faster, easier and cheaper cleaning

Twister™ can be used on any type of floor with no change of cleaning method or cleaning equipment needed. This, combined with the removal of periodic maintenance and the long lifetime\* of the Twister™ pads, cuts both cost and cleaning time. Twister™ is also a cost-effective choice due to eliminating\*\* the use of chemicals compared with traditional chemical-based cleaning methods. With Twister™ the floor owner gets a cleaner floor with high gloss. The cleaning contractor creates a high quality surface easier and faster.

- Reduce your cleaning time
- No periodic maintenance needed
- Twister™ pad with long lifetime
- No chemicals needed



\* Under optimal conditions at least 25 000 m<sup>2</sup>

\*\* If the floor is in bad condition, add a small dose of Twister™ Floor Conditioner. When upgrading the floor it is also recommended that Twister™ Floor Conditioner be used.



## Environmental sustainability

– eco friendly cleaning, just add water

Choosing environmentally compatible benefits everyone. The Twister™ method is the only totally environmentally friendly alternative to traditional chemical-based cleaning. At the same time, Twister™ is so effective that the result is a clean and hygienic floor without any need for layers of wax or polish. Choose the eco-friendly concept by using Twister™ for daily floor maintenance.

- **Reduced chemical usage – only water needed in daily cleaning\***
- **No wax, polish or periodic maintenance is needed**

## User friendly

– the same routine with better results

With the Twister™ system you only need water for cleaning. Dry mop the floor, select the appropriate Twister™ pad, add water and start your auto scrubber. This is all you have to do to get a perfect finish.

- **The Twister™ pads fit all types of machines and are available in a number of different sizes**
- **Twister™ replaces your regular pads and chemicals. Your regular cleaning routine remains the same.**
- **An effective method that saves time. One cleaning phase with Twister™ is enough, even on the most demanding surfaces!**

\* If the floor is in bad condition, add a small dose of Twister™ Floor Conditioner. When upgrading the floor it is also recommended that Twister™ Floor Conditioner be used.



# DCS Twister™ + Hybrid™

## A solution for every kind of floor



### DCS Twister™ Standard

A three step process that is performed during the standard cleaning routine. For optimal results each Twister™ step normally requires 2-3 weeks of operating with Floor Conditioner depending on the condition of the floor when you start the process. No extra time or human effort is required for the Twister™ Standard method. Use Twister™ White during daily maintenance until a clean and uniform surface appears. Change to Twister™ Yellow and increase the luster, now the brilliance of the floor appears. Continue the process with Twister™ Green and the result will be an incomparably shiny and clean floor. For daily maintenance use Twister™ Green to maintain the floor's shine and splendor.

### DCS Twister™ Intensive

Exactly the same process as Twister™ Standard, although with each step being run through for 6-10 consecutive passes. The Twister™ Intensive method is performed outside the standard cleaning routine. Twister™ Intensive has the advantage of immediately upgrading the floor. Depending on the machine efficiency and the initial wear on the floor, large areas can be finished in one working day. On stone floors use Floor Conditioner during the upgrade phase.

### DCS Twister™ Extreme

This is the ultimate method for creating extreme shine and luster. The floor is polished with a high-speed machine and Twister™ Green pad. All types of high-speed machines can be used.

### DCS Hybrid™

The Hybrid™ method is a combination of light grinding and the Twister™ method and will refurbish a worn stone floor with major scratches or "orange peel". Start with the Hybrid™ Black disc and immediately follow up with the Hybrid™ Red disc for light grinding of the stone surface. The surface should be treated until the floor has a uniform appearance after each step, at least 8 passes. The Hybrid™ light grinding is performed wet. Follow up with the Twister™ Standard or Intensive method as described above.







▲ Type of floor: Natural stone and wood  
Location: Cruise ship

▼ Type of floor: Marble  
Location: International airport





# Product overview



## DCS Twister™



### Twister™ Black

For heavy duty cleaning of stained and dirty industrial coatings and raw concrete surfaces. Removes oil, grease, soot and truck marks. Twister™ Black is the problem solver for the industry.



### Twister™ Red

For heavy duty cleaning of worn stone floors. Twister™ Red will effectively remove scratches and stains from the surface and leaves a clean, matt surface prepared for the subsequent Twister™ steps.



### Twister™ White

Step 1 for the Standard or Intensive Twister™ method. Twister™ White will remove tiny scratches from the surface and leaves a silky matt, cleaned and well prepared surface for the subsequent Twister™ steps.



### Twister™ Yellow

Step 2 for the Standard or Intensive Twister™ method. This stage leaves a surface that is well prepared for the final step of the Twister™ method.



### Twister™ Green

Final step for the Standard or Intensive method and also for daily maintenance of the floor. This step will effectively maintain a high gloss on the surface when used regularly. Twister™ Green is ideal for use on all floor surfaces such as stone, vinyl and linoleum floors. For high-speed polishing of HTC Superfloor™, terrazzo and natural stone surfaces. Twister™ Green is also very effective in polishing polish-coated vinyl and linoleum floors.



### Twister™ Floor Conditioner

For stone floors in bad condition, add a small dose of Twister™ Floor Conditioner. When performing an upgrade of the floor it is also recommended that Twister™ Floor Conditioner be used. Works excellently as a spray buffer with Twister™ high speed polishing. Twister™ Floor Conditioner is environmentally safe and does not contain wax or polish.





## DCS Hybrid™



DCS Hybrid™ consists of diamond segments in two different grit sizes, combined with a diamond impregnated pad attached to a soft Velcro holder. Available in 14", 17", 20" and 21" sizes. DCS Hybrid™ works on all single head scrubber machines. For large areas use auto scrubbers with sufficient down pressure (min. 70 kg).



### DCS Hybrid™ Black

DCS Hybrid™ Black is the most coarse segment of these new tools. It removes minor scoring, lippage, excessive wear and staining.



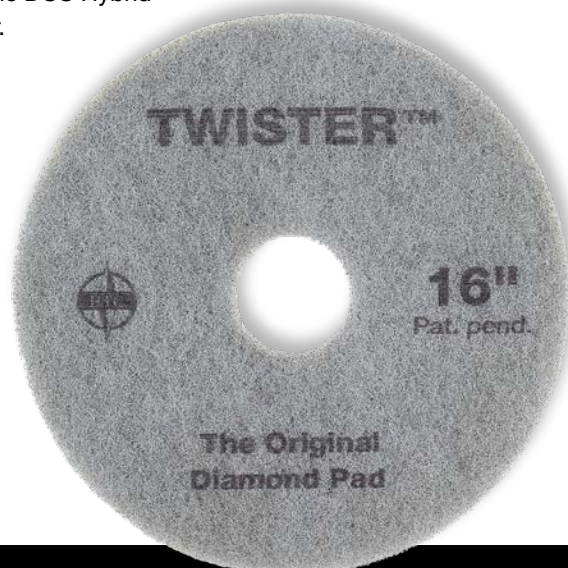
### DCS Hybrid™ Red

DCS Hybrid™ Red removes scratches, wear and staining. DCS Hybrid™ Red prepare the floor for further improvement with HTC Twister™.

## Mount the Twister™ and Hybrid™ pads to a Velcro holder



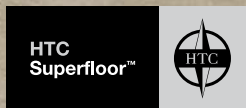
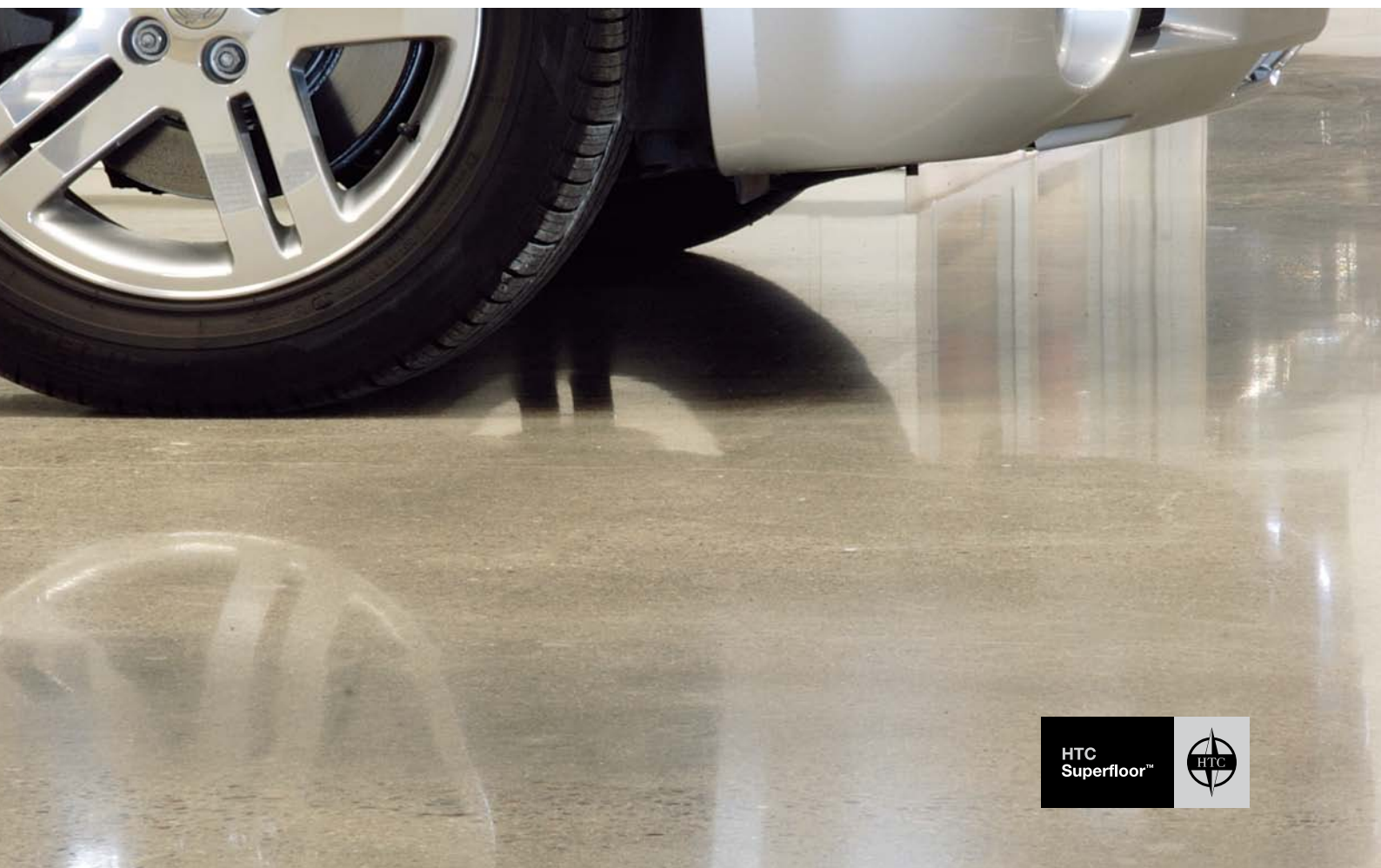
For maximum lifetime and best results, mount the DCS Twister™ pads to a Velcro holder without a central lock. The DCS Hybrid™ pads must be used together with a Velcro holder.





▲ Type of floor: Vinyl  
Location: Scandinavian hotel chain

▼ Type of floor: HTC Superfloor™  
Location: Car showroom





# DCS floor maintenance guide

Floor type	How to clean with Twister™	Recommended DCS Products
<b>Terrazzo Marble Limestone</b>	Ideal for upgrading (Twister™ Intensive or Standard) and daily maintenance with Twister™ Green. Dry buffing is effective for higher gloss (Twister™ Extreme). On surfaces in good condition, treated with chemical crystallization, use only Twister™ Green for maintenance.	Hybrid™ Black ● Hybrid™ Red ● Twister™ Red ● Twister™ White ○ Twister™ Yellow ● Twister™ Green ●
<b>Plastic Vinyl</b>	Ideal for upgrading (Twister™ Intensive or Standard) and daily maintenance with Twister™ Green. Dry buffing is effective for higher gloss (Twister™ Extreme). Twister™ Green gives ultra high shine “wet look” (gloss value more than 70) on wax coatings in good condition.	Twister™ White ○ Twister™ Yellow ● Twister™ Green ●
<b>Ceramic Tiles</b>	Ideal for upgrading (Twister™ Intensive or Standard) and daily maintenance with Twister™ Green. If necessary, we recommend the upgrade be started with Twister™ Red.	Twister™ Red ● Twister™ White ○ Twister™ Yellow ● Twister™ Green ●
<b>Linoleum Granite</b>	Daily maintenance with Twister™ Green.	Twister™ Green ●
<b>HTC Superfloor™, Polished Concrete</b>	Daily maintenance with Twister™ Green. Dry buffing is effective for higher gloss (Twister™ Extreme).	Twister™ Green ●
<b>Power Trowelled Concrete</b>	Ideal for upgrading (Twister™ Intensive or Standard) and daily maintenance with Twister™ Green.	Twister™ White ○ Twister™ Yellow ● Twister™ Green ●
<b>Unpolished Concrete</b>	Daily maintenance with Twister™ Black. For surfaces with high cleaning frequency switch to Twister™ Red.	Twister™ Black ● Twister™ Red ●
<b>Resin Floors (Epoxy, Acrylic)</b>	Old floors – daily maintenance with Twister™ Red. For extremely dirty surfaces use Twister™ Black.  New floors – daily maintenance with Twister™ Green.	Twister™ Black ● Twister™ Red ●  Twister™ Green ●

For more detailed information please see [www.htc-twister.com](http://www.htc-twister.com)



#### Head office

---

##### HTC Sweden AB

PO Box 69  
614 22 Söderköping  
Sweden

Street (delivery) address:

Klevvägen 7  
614 92 Söderköping  
Sweden

Phone: +46 (0)121-29400  
Fax: +46 (0)121-15212  
E-mail: [info@htc-sweden.com](mailto:info@htc-sweden.com)  
[www.htc-floorsystems.com](http://www.htc-floorsystems.com)

##### HTC Floor systems Ltd.

Unit 4 Kingston Business Park  
Dunfermline Court  
Maidstone Road  
Kingston  
Milton Keynes  
MK10 0BY  
Great Britain

Phone: +44 (0)845 4602500  
Fax: +44 (0) 845 460 1500  
E-mail: [info@htc-europe.co.uk](mailto:info@htc-europe.co.uk)  
[www.htc-floorsystems.com](http://www.htc-floorsystems.com)

---

##### HTC Floor Systems GmbH

Im Petersfeld 7  
65624 Altendiez  
Germany

Phone: +49 (0) 6432 / 64558 - 0  
Fax: +49 (0) 6432 / 64558 - 22  
E-mail: [info@htc-europe.de](mailto:info@htc-europe.de)  
[www.htc-floorsystems.com](http://www.htc-floorsystems.com)

---

##### HTC France S.A.S.

ZI Mondeville Sud  
Rue Nicéphore Niepce  
14120 Mondeville  
France

Phone: +33 (0)2 31 34 27 00  
Fax: +33 (0)2 31 34 09 29  
E-mail: [info@htc-europe.fr](mailto:info@htc-europe.fr)  
[www.htc-floorsystems.com](http://www.htc-floorsystems.com)

---

##### HTC Inc.

5617 Tazewell Pike  
Knoxville, TN 37928  
USA

Phone: +1 865 689 2311  
Fax: +1 865 689 3991  
E-mail: [info@htc-america.com](mailto:info@htc-america.com)  
[www.htc-floorsystems.com](http://www.htc-floorsystems.com)

*Diamonds  
-it's brilliant*

