

# Posthole borer

Our hydraulic posthole borer is a robust tool suitable for all kind of earth drilling jobs

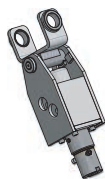




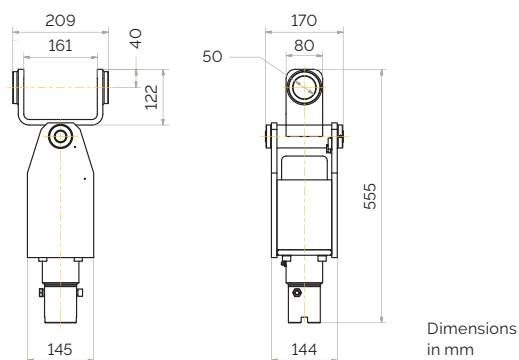
# Technical specifications

## Technical data

		LPHB-M
Carrier weight class <sup>1</sup>	t	1-3
Product weight	kg	31
Oil flow rate	l/min	20-60
Operating pressure	bar	100-140
Rotational speed	rpm	80-200
Maximum torque	Nm	450



<sup>1</sup> Weights apply to standard carriers only. Any variances must be agreed with Epiroc and/or the carrier manufacturer prior to attachment.



Dimensions  
in mm



## Augers

	Diameter mm	Length mm	Weight kg
Auger	90	870	5.8
Auger	150	870	10.3
Auger	200	870	13.7
Auger	250	870	17.2
Auger	280	870	20.6
Auger	350	870	24.0
Extension rod	-	500	4.7



## Features

- > Flexible mounting on mini excavators & skid steer loaders
- > Robust design
- > Minimum maintenance
- > Quick & easy auger exchange
- > Exchangeable auger tips
- > Adjustable rotation speed
- > Oil flow divider (optional)
- > Standard connection 1/2" BSP
- > Hole diameters from 90-350 mm/3.5-13.7"
- > Hole depth up to 1500 mm/59"

# United in performance. Inspired by innovation.

Performance unites us, innovation inspires us, and commitment drives us to keep moving forward.

Count on Epiroc to deliver the solutions you need to succeed today and the technology to lead tomorrow.

**epiroc.com**

